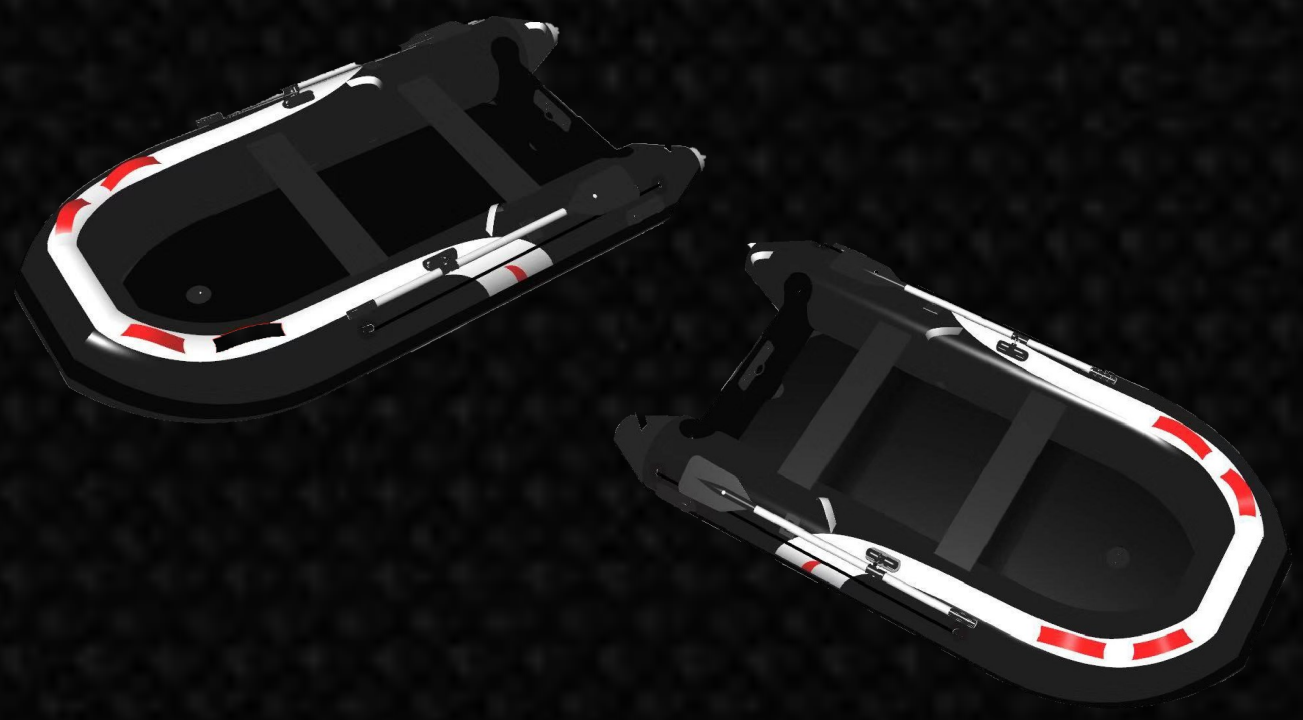




SETTING UP YOUR HYDRUS



SETTING UP

Thanks for purchasing your Hydrus inflatable boat.

If you've never owned an inflatable boat then read on to make sure setting up your new Hydrus is a breeze.

VALVES

Note: Always inflate the tubes in stages. Fully inflating one tube at a time may damage the internal baffles.

- Locate and make sure all valves are in the closed position before inflating. Twist anticlockwise until in the up position.
- Using the supplied foot pump or optional electric pump inflate the tubes to around 20-30% starting with the side tubes followed by the front tube. Giving your boat some shape.

ALUMINIUM DECK

Starting from the bow insert the first piece (1) by pushing as far up as possible being careful to position the hole above the keel valve.

- Next insert the transom piece tucked under the lip on the transom lining the drain (plug) with the cut out section.
- continue to insert the numbered pieces towards the centre making sure to keep the edges lined up.
- Once you get to the last two pieces lift them up so as to form a tent shape.
- Make sure there is no fabric stopping them with everything aligned and then simply put pressure on the top to push them down into place.
- To position the stringers down the sides, place an oar directly underneath the boat to raise it slightly making it easier to slot the stringers in place. This can be a tight fit to begin with but does get easier in time.
- Install the seats by sliding them along the seat rail while the tubes are still soft.
- Then continue to inflate the tubes to the desired psi
- Failing to inflate all the chambers to the correct psi will affect the performance of the Hydrus

AIR DECK

- Place the deflated air deck in the boat with the plinth on the underneath. This is to keep the air deck flat and add rigidity to the boat.
- Make sure the hole is above the keel valve at the bow end and underneath the lip on the transom the other end.
- Feed the edges underneath the tubes from bow to stern.
- Install the seats by sliding them along the seat rail while the tubes are still soft.
- Inflate the floor to the full 10PSI.
- Then continue to inflate the tubes to the correct PSI.
- Failing to inflate all the chambers to the correct psi will affect the performance of the Hydrus

Note: Make sure to use a pump with a pressure gauge so you know you are at the correct psi.

If using a foot pump then inflate until you feel resistance in the pump.

KEEL

The keel should always be the last chamber to inflate.

If all the chambers are inflated to the factory recommendations then your boat will perform well.

If it feels like it's flexing at all then chances are it's not inflated correctly.

If you find you are losing air from any of the chambers grab the valve tool from the repair kit and tighten all the valves.

PACKING AWAY

- Deflate the tubes by pushing in the valve pin and turning clockwise to lock in place.
- Make sure as much air is out of the tubes as possible.
- Place the air or ally deck in the supplied carry bag.
- From the side fold over the tubes in half down the middle. Make sure rowlock caps are on.
- Aim to get the folded tubes so they are no wider than the transom.
- From the stern, fold the sponsons (cones) in and on top of the transom.
- Proceed to roll the boat up making sure the valve caps are back on as you go.
- You may need to release any air still left in the tubes before locking valves.
- Place the envelope bag on the ground and position the boat in the middle of it to then finish folding the bag.

Note: If keeping your boat stored for long periods of time always make sure the boat is clean and dry to prevent mould.

CARING FOR YOUR BOAT

UV protection is advised. It's your pride and joy so make sure it lasts as long as possible.



August Race is a market leader in Rib care and offers cleaners, protectors and mould removers.

You will get a certain amount of air loss if leaving the boat stored and inflated. It may be the valves that need tightening. If losing more air than normal then you may have a small leak in which case spraying soapy water around the boat will produce small bubbles to identify the leak.

Check out our [REPAIRS](#) leaflet for more repair information.



01903 816390



carlo@inflatableboatfishing.com



www.inflatableboatfishing.com

HYDRUS III